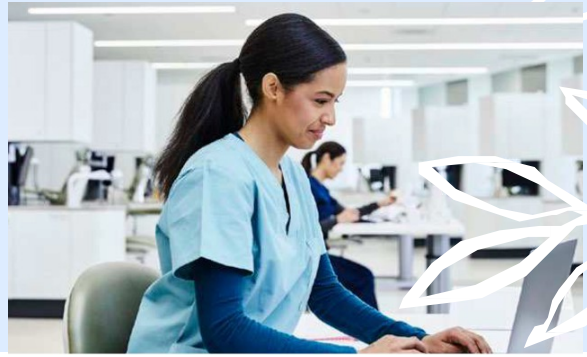


Sherpath for Dental Assisting

Best Practices



Understanding Sherpath for Dental Assisting

Sherpath for Dental Assisting offers interactive course content with a variety of assignment types, quizzing tools, and teaching resources to help you better engage students and achieve your learning objectives.

Course Setup Options

When first setting up Sherpath, there are two primary ways you can create your course: you can use the default settings to automatically create your Course Plan or manually build your Course Plan.

Default Settings

This option is often recommended for beginning users, as it makes the initial course creation process simple and efficient. To complete your course setup:

1. Select the course content to include and identify how you want it organized
2. The course content will be added automatically to the Course Plan
3. You can still make changes after the initial setup to personalize your course

Manual Customization

This option typically works best for advanced users, as it allows for heavy customization during the initial course creation process. To complete your course setup:

1. Start with a blank Course Plan and create your own customized folders
2. Manually add the individual resources that you want to include in your course
3. You can still make changes after the initial setup for additional customization

Instructor and Student Resources

Relevant teaching and student resources, class activities, and reading recommendations from your Elsevier textbook can easily be made visible to students through Sherpath's Course Plan. Evolve Instructor and Student Resources are easily accessible from the "resource and eBooks" section in Sherpath.

• Instructor Resources

Instructor resources include: PowerPoint presentations, student handouts, TEACH lesson plans, and checklists specific to applicable chapters.

• Student Resources

Student resources include: videos, video scripts, interactive Q&A videos, and tray setup questions specific to applicable chapters.

Sherpath for Dental Assisting

Best Practices

Assignment Options

Lessons

Digital lessons create an engaging, didactic experience to better help students achieve learning objectives.

- Relevant, need-to-know content includes: lesson key points, check your knowledge practice questions, and lesson assessments at the end of each lesson to gauge proficiency.

Note: Lessons are only available for select Sherpath collections.

Elsevier Adaptive Quizzing (EAQ)

Adaptive quizzing in your Sherpath course allows you to create relevant quizzes on a wide variety of topics to facilitate student knowledge application with high-quality practice questions. Many assignments can be created by both instructors and students. This personalized, formative quizzing tool allows you and your students to ensure content mastery, better understand areas of weakness and implement targeted remediation.

There are **3 different quizzing options** available in EAQ: Mastery, Custom, and Custom by Question.



Mastery assignments provide a personalized quizzing approach with the goal of having students answer increasingly difficult questions as they progress. There are 3 levels of Mastery: Novice, Intermediate, and Proficient.



Custom assignments allow the instructor or student to select a topic or topics and a specific number of questions for students to complete. Questions are randomly selected for each student based on their current Mastery level of the topic.



Custom by Question assignments allow the instructor to build a quiz by choosing questions relevant to the selected topic area. In this type of quiz all students receive the same questions.

How Does Mastery Work?

All questions answered are calculated into the overall level of Mastery.

Students must consistently answer questions correctly at each level to achieve mastery. Questions are tagged to multiple topic areas, allowing students to build mastery in multiple topics on any assignment.

Achieving Mastery level takes time and students should not expect to achieve proficient level mastery in one day. The quizzes are adaptive, providing each student a various number of questions to achieve the Mastery level goal.

For more details about Elsevier Adaptive Quizzing and how to optimize it within your course, review our [EAQ Best Practices](#) 

Sherpath for Dental Assisting

Best Practices

Deepen Your Insights with Data

Performance Dashboard and Reports

Comprehensive assignment dashboards and analytics put vital performance data at your fingertips. This enables you to quickly make content coverage adjustments, see which students are completing assignments, and identify individuals who may be struggling.

▶ **Review the Sherpath Performance Dashboard to learn how to leverage these analytics**

- **Performance Summary**
This high-level overview of both assignment and student performance is also your landing page. It illustrates student progress through your course at-a-glance with three major reporting categories: completed assignments, high performing students, disengaged students.
- **Gradebook**
This section provides students' scores for assignments with multiple filters available, allowing you to see specific assignment scores along with score averages. The gradebook can also be exported.
- **Engagement Summary**
This highlights course engagement based on assignment type, enabling you to better understand how students are utilizing specific Sherpath resources.
- **Assignment Summary**
This overview provides a detailed look at student performance on all assigned resources.
- **EAQ Topic Report**
This section provides a detailed look at student performance based on topic organization.



Key Point: If you want data on student performance, you must assign the resource (lesson, quiz, etc.) Assigning in Sherpath does not mean a course grade must be associated, but it will ensure faculty receive important information about student performance on Sherpath activities.

Ideas for Implementation Throughout Your Course

Tips for Building Student Knowledge with Lessons

- **Assign Lessons prior to class** and prioritize Lessons that help meet course objectives.
- **PowerPoint slides can be made available** to students or reserved for faculty use.
- **It is important to communicate your expectations to students** and explain the intent of each learning tool to build knowledge. Assigning too many resources can overwhelm the student.
- **Read with a purpose!** Have students complete the Lesson first and write down 3 topics they feel are important to explore further. They can then focus on review of those 3 topics in the eBook.
- **Use the eBook to engage students** as they read, provide instructor highlights, comments, or focused questions.
- **Assign a post-class quiz using Adaptive Quizzing** to assess if students can apply knowledge in preparation for exams.

Note: Lessons are only available for select Sherpath collections.

Best Practices

Additional Tips for Student Engagement

- **Use the TEACH lesson plans** found under Instructor Resources for learning activities and incorporating the critical thinking questions for classroom discussion.
- **Review the lowest scoring questions** and correct answers on the Lesson Performance Report to facilitate class discussion.

Strategies for Evaluation

- **Review performance reports** for all assignments and address cohort weaknesses during class time.
- **Students and instructors can use EAQ** as a formative assessment.
- **Monitor progress weekly.** Early identification and intervention of “at-risk” students is key!
- **Consider assigning additional Lessons or EAQs** for remediation as needed

Strategies for Grading

There are many ways to incorporate Sherpath assignments into course grades. A consistent approach to student workload and grading in Sherpath is key to successful integration in multiple courses across the program.

Some considerations:

- Adaptive Quizzing is the **best formative assessment of student learning**. Consider utilizing a portion of the course grade for EAQ quizzes.
- Many programs include Lesson completion as part of **course preparation**, lending them to more of a “completion” type requirement or grade.