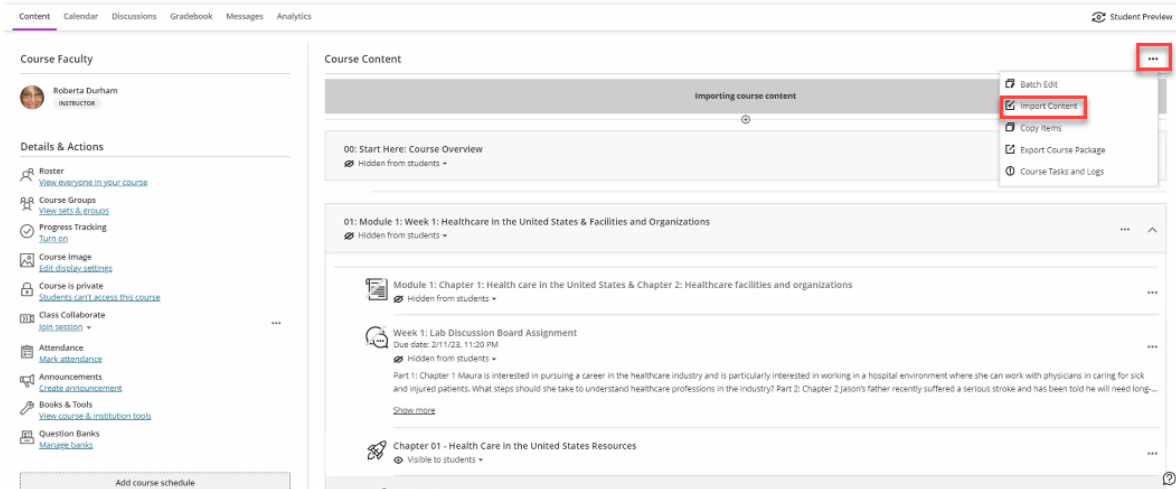
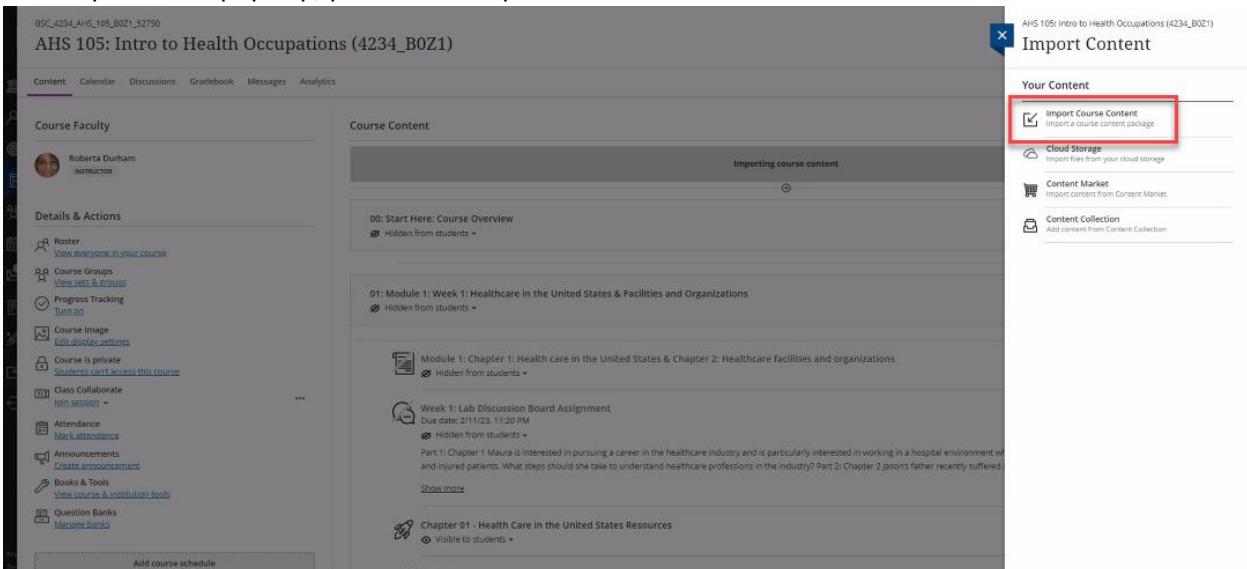


Steps to Import Test banks into Blackboard Ultra

1. On your my Evolve page, please click the My Other Products tab and locate the resource.
 - a. (NOTE: if you cannot find the resource it needs to be added to your account)
 - i. Do not click your instructor-Led Course ID version.
2. Click on the title of the resource.
3. To download every test bank download file into Blackboard as one file, please click the Test bank button (you may need to scroll down to find it).
 - a. If you want to download the chapters individually, please navigate into Instructor Resources, and click on the test bank file folder. From there you can download them by chapter.
4. Navigate to your Blackboard course.
5. Within the Course Content Page, please click the 3 dots located directly below student preview in the top right corner. Afterwards, please click Import Content



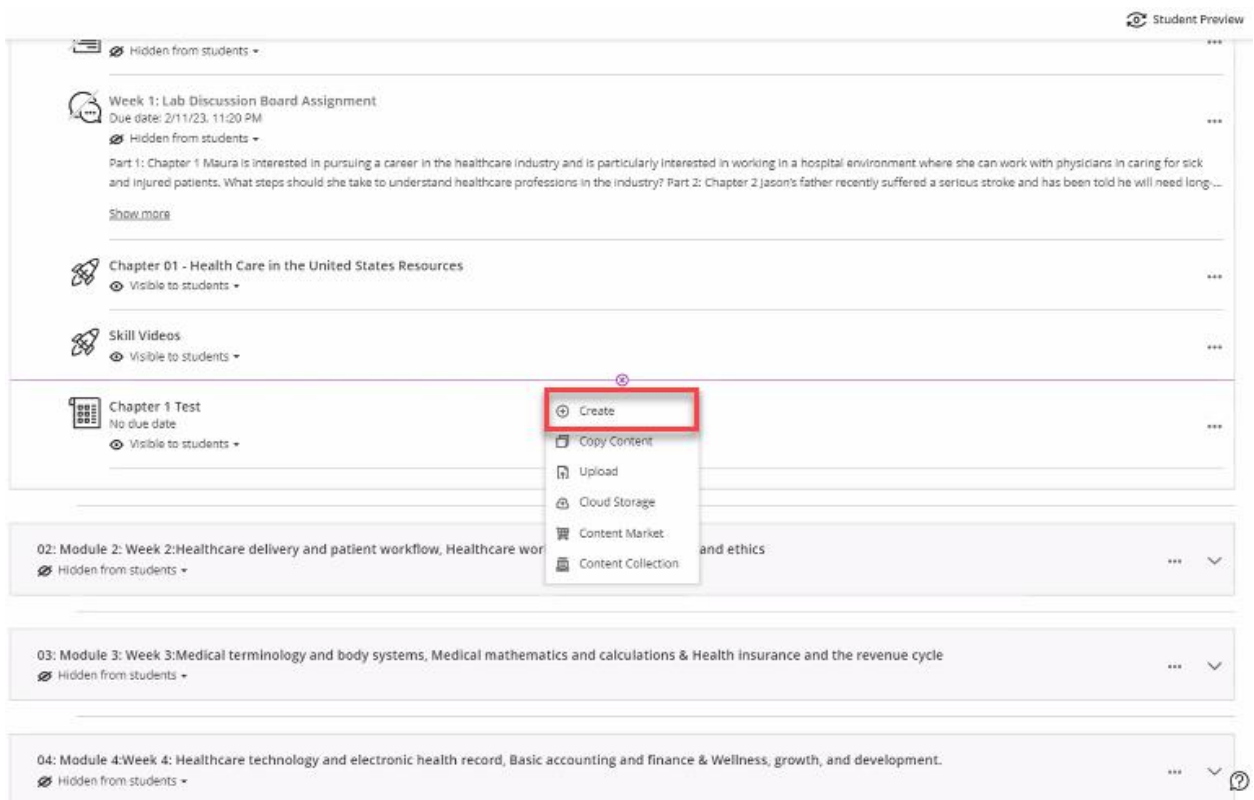
6. On the panel that pops up, please click Import Course Content



7. Locate the test bank file that you downloaded onto your computer from step 3.
8. Once the file has finished downloading, you will be able to locate the test banks in a folder at the bottom of the course content page.
 - a. You can drag the test bank files into your different modules that you have created at this point.
 - b. It's highly recommended to change the name of the test to something different.
 - i. Example: From Test Bank – Chapter 1 to Chapter 1 Test.

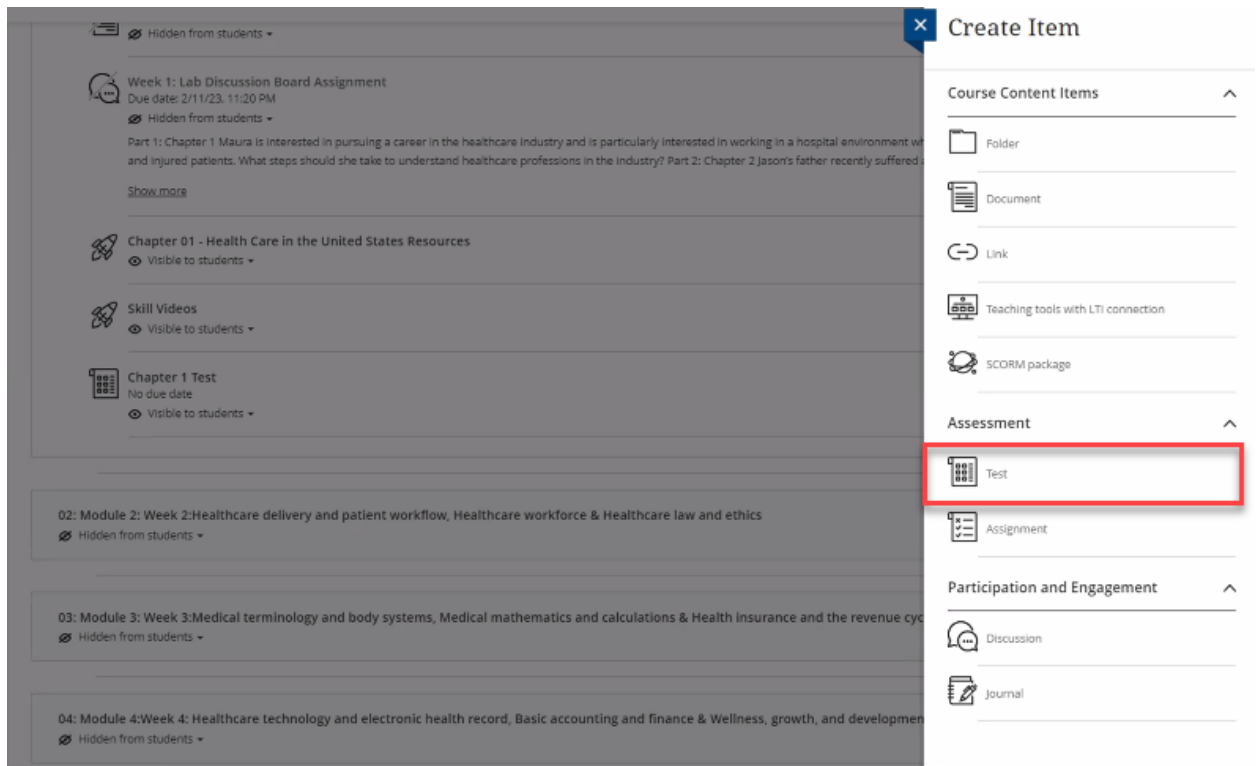
Creating Custom Quiz from the Imported Test Banks

1. In Blackboard Ultra, go into your course.
2. Under the Course Content page, hover in the center where you'd like to add a custom quiz and click the + button.
3. Click Create.

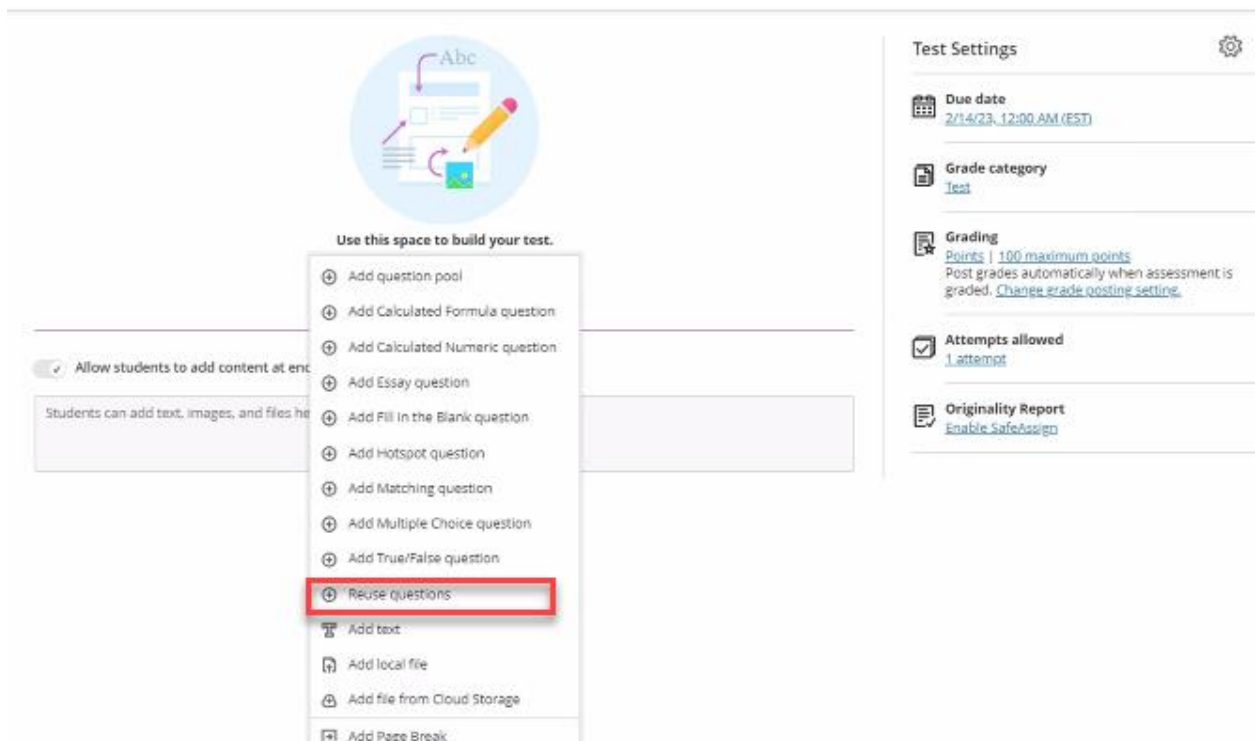


The screenshot displays the Blackboard Ultra Course Content interface. At the top right, there is a 'Student Preview' button. The main content area shows a list of course items. The item 'Chapter 1 Test' is selected, and a context menu is open over it. The menu options are: Create (highlighted with a red box), Copy Content, Upload, Cloud Storage, Content Market, and Content Collection. Other items in the list include 'Week 1: Lab Discussion Board Assignment', 'Chapter 01 - Health Care in the United States Resources', 'Skill Videos', '02: Module 2: Week 2: Healthcare delivery and patient workflow, Healthcare work...', '03: Module 3: Week 3: Medical terminology and body systems, Medical mathematics and calculations & Health insurance and the revenue cycle', and '04: Module 4: Week 4: Healthcare technology and electronic health record, Basic accounting and finance & Wellness, growth, and development.'

4. On the panel that appears, click the test button.



5. Hover toward the middle of the blank area and click the + button that appears.
6. Click Reuse Questions.



7. On the page that will appear you will see all of the test banks that were previously imported into your Blackboard course. Please check the box next to any of the test banks, to see questions specifically for that chapter.

- a. Once you have done that, please check the box next to the questions to choose the questions you'd like to add to your test.
- b. Click the Copy Questions button to add these questions to your test.

New Test 2/13/23
Reuse Questions

Filter 913 Results

Filter Criteria
Clear all

Keyword Search
Type search term

Sources

ASSESSMENTS

- Chapter 1 Test
- Test Bank - Chapter 02
- Test Bank - Chapter 03
- Test Bank - Chapter 04
- Test Bank - Chapter 05
- Test Bank - Chapter 06
- Test Bank - Chapter 07
- Test Bank - Chapter 08
- Test Bank - Chapter 09
- Test Bank - Chapter 10
- Test Bank - Chapter 11
- Test Bank - Chapter 12

Select all | Clear all

Chapter 1 Test

- Multiple Choice
Who was Florence Nightingale? 1 points
- Multiple Choice
Who was Hippocrates and what is he known for? 1 points
- Multiple Choice
In American history, which public location was a place where healthcare services were performed, including surgery? 1 points
- Multiple Choice
What is the basic idea of the medical model? 1 points
- Multiple Choice
Which healthcare model focuses on the prevention of disease and the maintenance of a person's overall welfare? 1 points
- Multiple Choice
Which term refers to death or the risk of death? 1 points
- Multiple Choice 1 points

0 questions will be copied

Cancel Copy Questions

8. You will be able to see any questions that you've imported into your test at this point. To continue to add more questions to your quiz from different chapters, please repeat step 5-7.