

# Evolve Link: External Tool Setup for Moodle

Introduction: This guide will walk you through setting up Evolve Link as an External Tool in Moodle, or what changes may be necessary if upgrading your version of Moodle.

**\*\*\* READ THIS FIRST \*\*\***

**NOTE 1:** Schools employing a multi-instance deployment model (ex. using distinct virtual machines to create different environments on a per-campus/per-program basis: *school.moodle.edu/campus-1* and *school.moodle.edu/campus-2*) may experience userID conflicts during launch because of the way the LMS does not ensure unique IDs for users across instances. We require unique identifiers across instances for launches to be successful.

**NOTE 2:**

- A. If you are installing outcomes on Moodle 3.1 to 3.4 for the first time, we recommend upgrading to 3.5 to 3.6.8 instead (option D). If you cannot upgrade to those versions, read notes 3 and 4, then follow the full External Tool Setup section below.
- B. If you WERE on Moodle 3.1 to 3.4, are upgrading to 3.5 or above, AND already had the moodle-ltiservice\_gradebookservices plugin installed, move the moodle-ltiservice\_gradebookservices plugin and its subdirectory out of the main directory. DO NOT UNINSTALL the plugin (or you will lose all previous mapping, see [https://github.com/CengageEng/moodle-ltiservice\\_gradebookservices](https://github.com/CengageEng/moodle-ltiservice_gradebookservices) to learn more). Read notes 3 and 4, then skip to step 7 of External Tool Setup.
- C. If you WERE on Moodle 3.1 to 3.4, are upgrading to 3.5 or above, AND DID NOT already have the moodle-ltiservice\_gradebookservices plugin installed, you do not need to install the plugin. Read notes 3 and 4, then skip to step 7 of External Tool Setup.
- D. If you are on Moodle 3.5 or above, you do not need to install the moodle-ltiservice\_gradebookservices plugin. Read notes 3 and 4, then skip to step 7 of External Tool Setup.
- E. If you are on Moodle 3.7.x or above, we recommend downgrading to 3.5 to 3.6.8. If you cannot, Moodle 3.7.x and above no longer support assignment information and grade pass back (outcomes) services. Users can still export grades from Evolve products and import those



into Moodle's gradebook directly. If you cannot upgrade to those versions, **read notes 3 and 4, then skip to step 7 of External Tool Setup.**

**NOTE 3:** The following specific versions of Moodle have a bug that prevents the outcomes service from being able to update assignment information (including grade pass back) once it is created. We advise updating to a higher version (up to 3.6.8) that is not listed here to avoid any issues with outcomes.

#### Moodle Versions

3.5.3 - Bug still exists

3.6.1 - Bug still exists

3.7 - Bug still exists

**NOTE 4:** The following Evolve products will pass outcomes/grades back after setting up the external tool (*for Moodle 3.1 to 3.6.8*):

- Elsevier Adaptive Quizzing Next Generation (EAQ NG)
- HESI Prep Suite (*may be listed as any combination of HESI Case Studies, HESI Practice Tests, or HESI Patient Reviews*)
- Nursing Concepts Online Next Generation (NCO NG)
- Sherpath

Gradable items in these products need to be set up by faculty as assignments in Moodle for the outcome/grade to pass back (*for Moodle 3.1 to 3.6.8*). Faculty can refer to the video and guide entitled

**Creating Graded Evolve Assignments in Moodle** for directions on creating these.

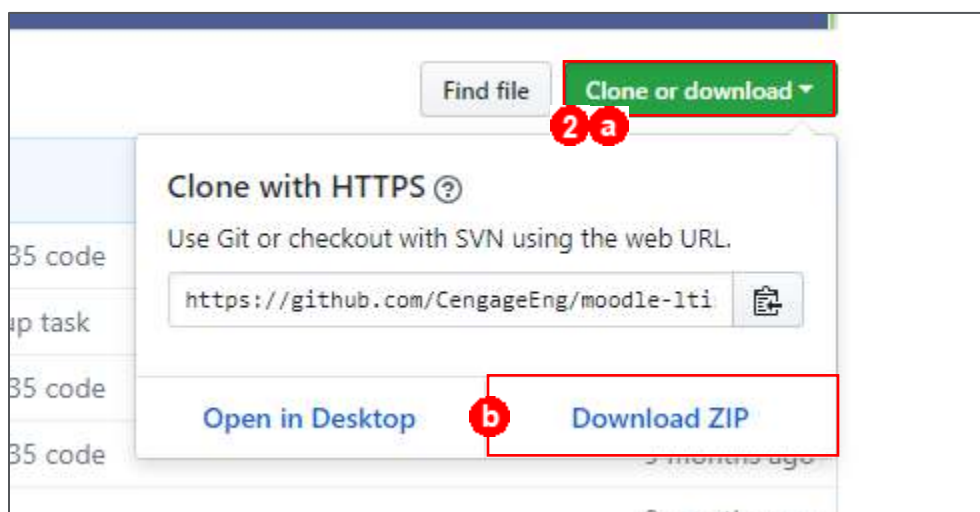
- Clinical Skills (*including Clinical Skills inside Simulation Learning System (SLS)*)
- Elsevier Adaptive Learning (EAL)
- Evolve Resources
- Evolve Online Courses

Outcomes/grade pass back are not possible for any of the following Evolve products (for all Moodle versions):

- HESI Next Generation Testing (HESI NG)
- SimChart
- SimChart for the Medical Office (SCMO)
- Simulation Learning System (SLS) (If Clinical Skills is included in this product, it can pass grades back if the faculty member creates an assignment for the gradable item, as listed in the paragraph above.)
- Virtual Clinical Excursions (VCE)
- Virtual Medical Office (VMO)

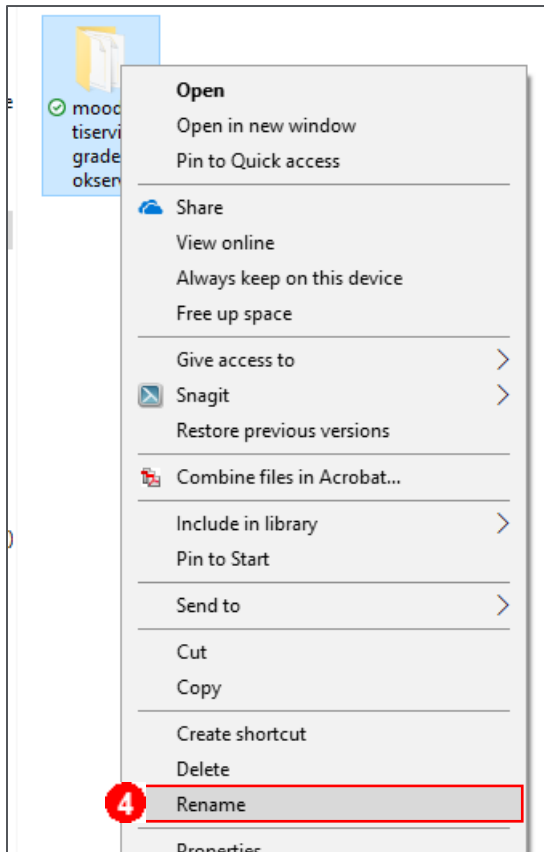
## External Tool Setup

1. Login to Moodle as an Administrator.
  - For any version of Moodle 3.4 or earlier, the plugin **moodle-ltiservice\_gradebookservices** must first be installed. (Moodle 3.5 and above have a slightly different plugin already integrated. **Skip to step 7 if using Moodle 3.5 or above.**)
2. Go to [https://github.com/CengageEng/moodle-ltiservice\\_gradebookservices](https://github.com/CengageEng/moodle-ltiservice_gradebookservices) and download the plugin zip file using the button **Clone or download** and then **Download ZIP**. (The plugin has been tested on Moodle 3.2 and up.)

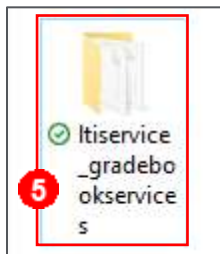


3. Navigate to the downloaded zip file on your computer and open it by right-clicking on the file and selecting **Open**.

4. Right-click on the folder inside the zip file and select **Rename**.



5. Rename the folder the following: **ltiservice\_gradebookservices**



**NOTE:** Delete any folder named **Scripts** inside the zip, as this is not a folder that Moodle needs.

6. Install this sub-plugin in Moodle by following the instructions at the following link:

[https://docs.moodle.org/31/en/Installing\\_plugins#Installing\\_via\\_uploading\\_ZIP\\_file](https://docs.moodle.org/31/en/Installing_plugins#Installing_via_uploading_ZIP_file)

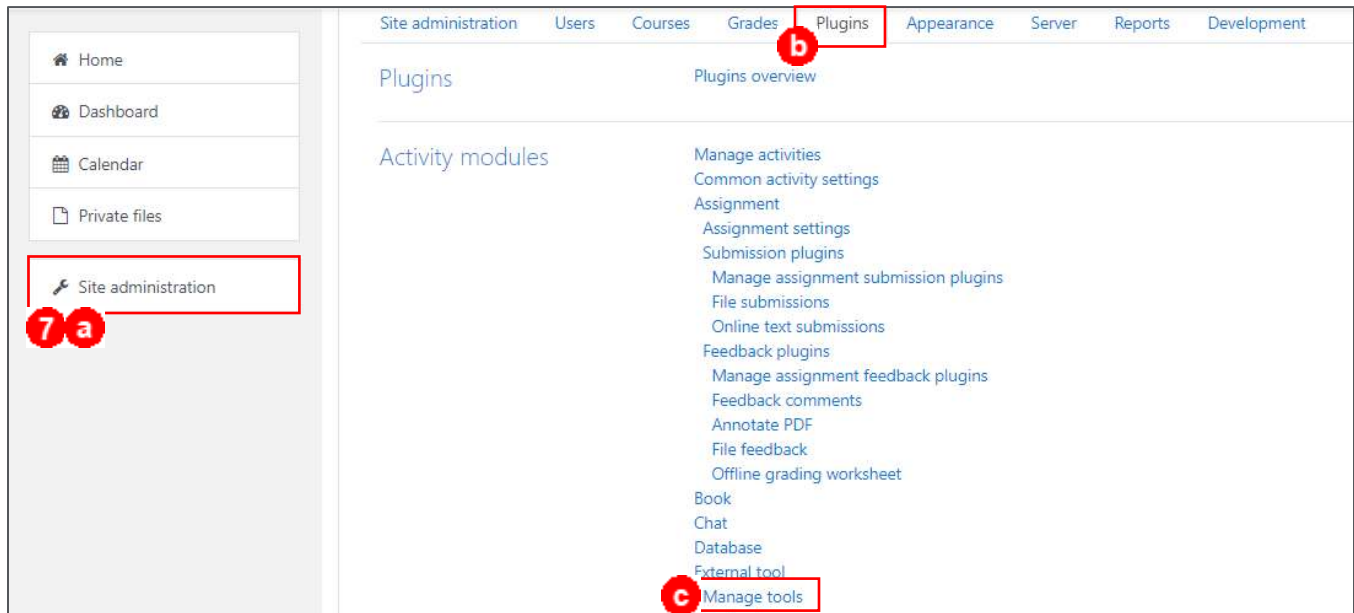
- For additional information, please visit

[https://docs.moodle.org/dev/LTI\\_Gradebook\\_Services](https://docs.moodle.org/dev/LTI_Gradebook_Services)

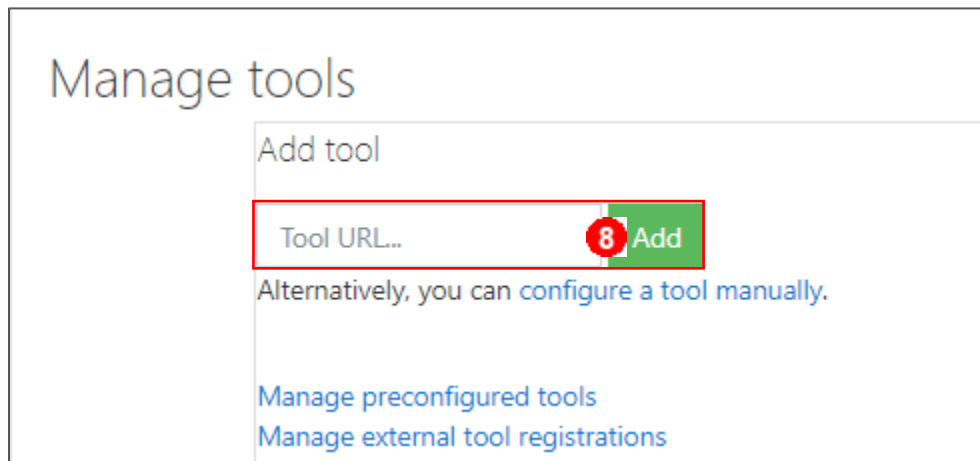
## Evolve Link: External Tool Setup for Moodle

Moodle 3.5 and above, start here. (With Moodle 3.7.x and above, gradebook assignment creation and grade pass back are not supported.)

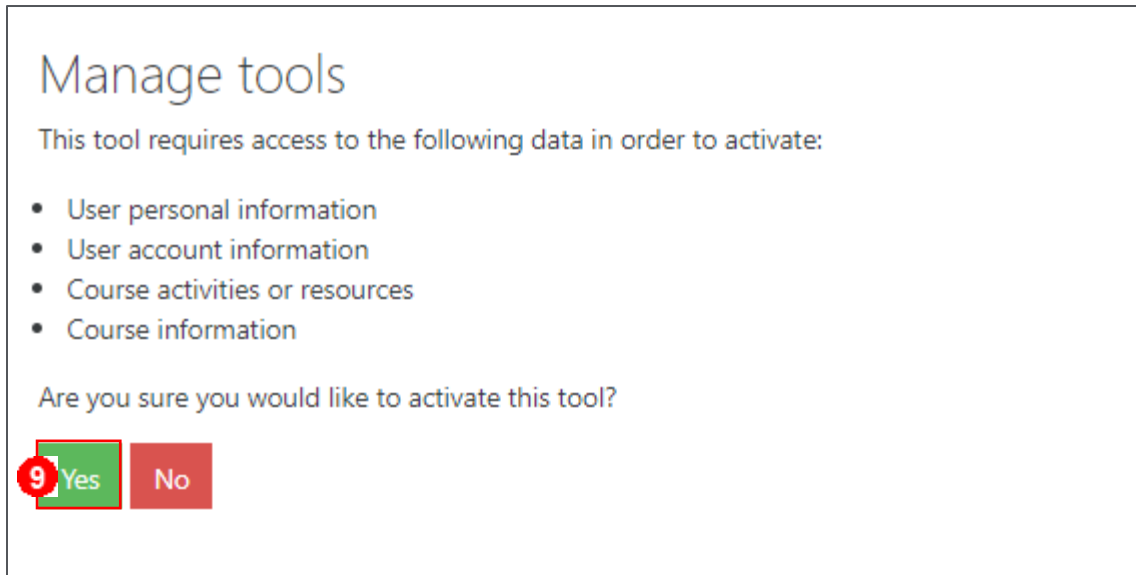
7. In Moodle, go to **Site administration > Plugins > Activity modules section > External Tool > Manage tools.**



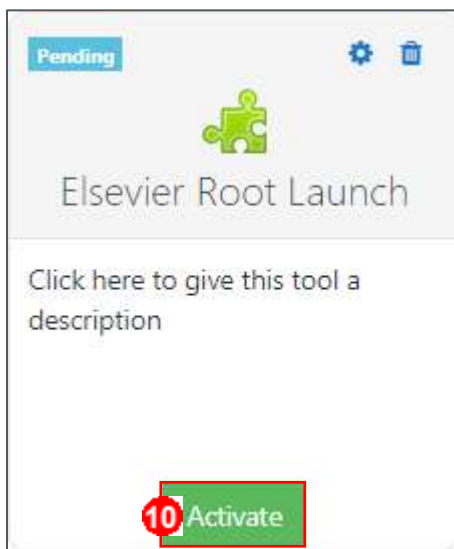
8. Enter the **Tool URL** included in the fulfillment email you received from Elsevier and click **Add**.



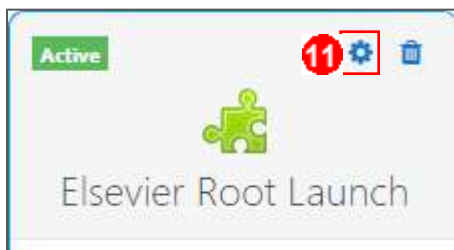
9. Click **Yes** when prompted to activate the tool.



10. Click the **Activate** button for the Elsevier Root Launch tool.



11. Click the **Gear** icon to edit Elsevier Root Tool settings.



12. On the settings page, make the following selections and then click **Save changes**.

- **Tool configuration usage:** Do not show; use only when a matching tool URL is entered
- **Default launch container:** New window
- **Share launcher's name with tool:** Always
- **Share launcher's email with tool:** Always
- **Accept grades from the tool:** Delegate to teacher

13. Click the **Gear** icon on the Elsevier Evolve Link tool.



14. On this settings page, make the following selections and then click **Save changes**.

- **Tool configuration usage:** Show in activity chooser and as preconfigured tool
- **Default launch container:** New window
- **Share launcher's name with tool:** Always
- **Share launcher's email with tool:** Always
- **Accept grades from the tool:** Delegate to teacher

*END OF GUIDE*